



CARIAA
Collaborative Adaptation Research
Initiative in Africa and Asia

Canada



Effective approaches to research uptake



Georgina Cundill Kemp
IDRC



OVER 450
RESEARCHERS
WITH DIFFERENT BACKGROUNDS
AND EXPERTISE

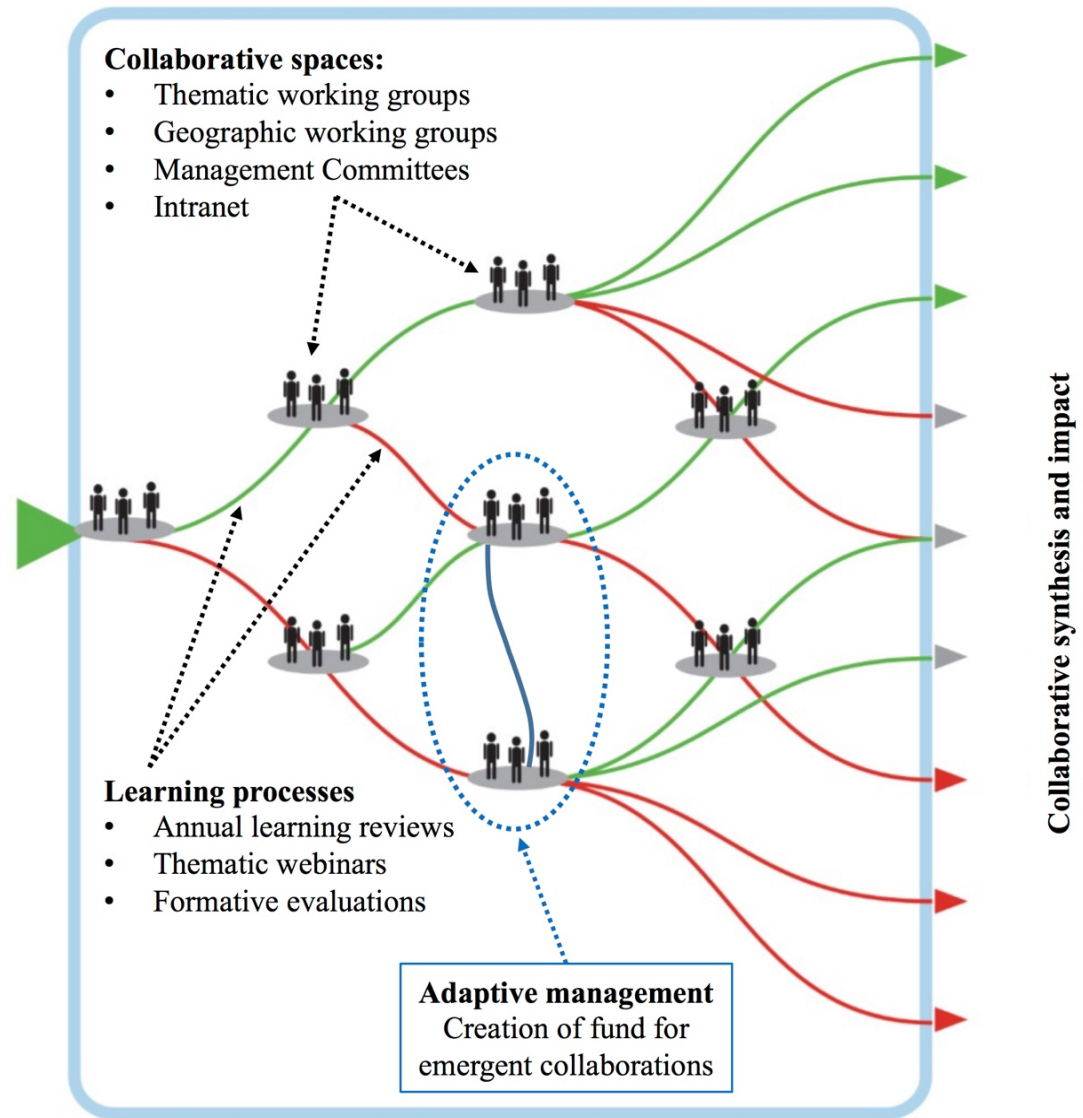
40+
INSTITUTIONS



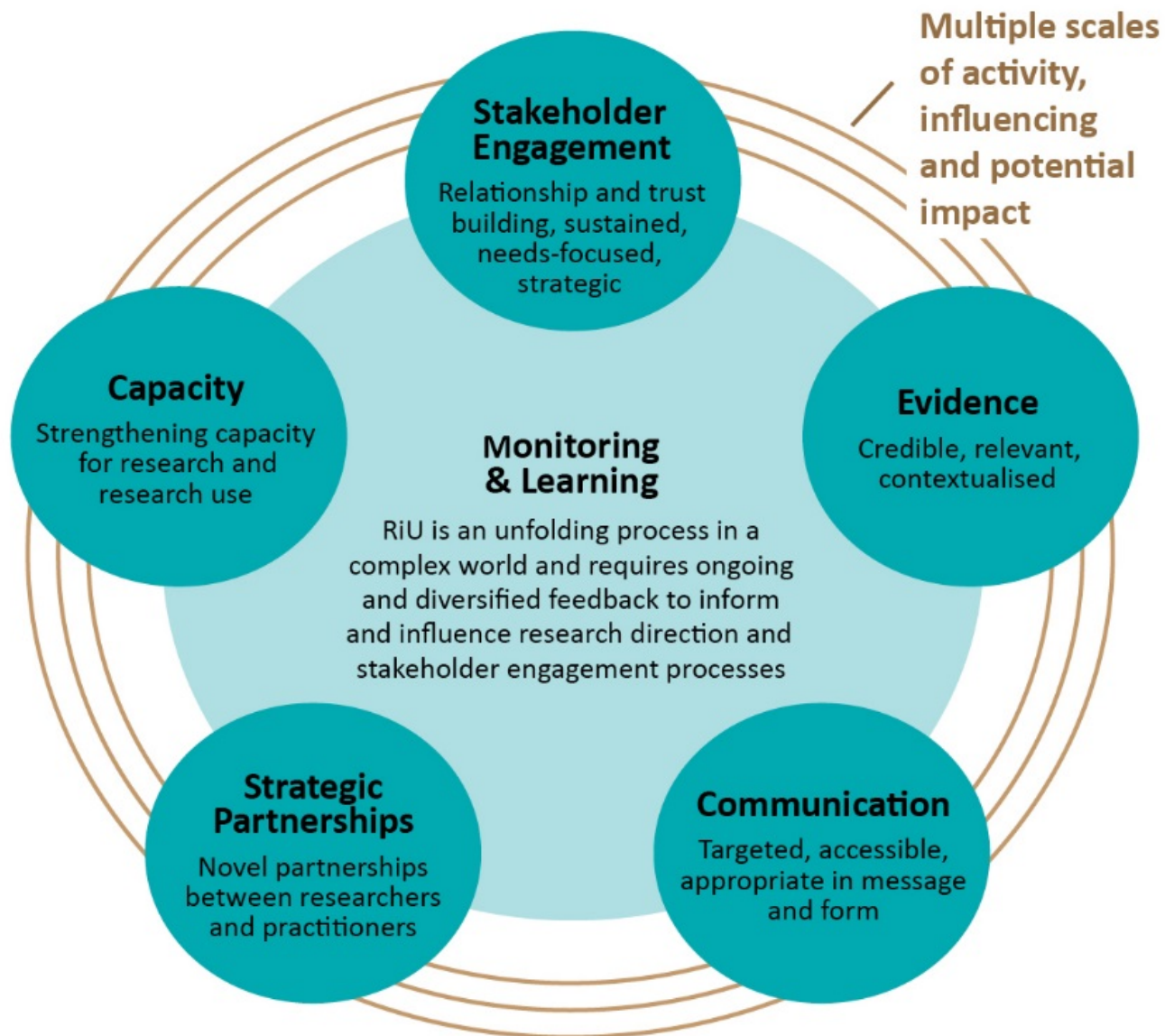
IN **15+**
COUNTRIES
IN ASIA 
AND AFRICA

THROUGH
4 TRANSDISCIPLINARY
NETWORKS

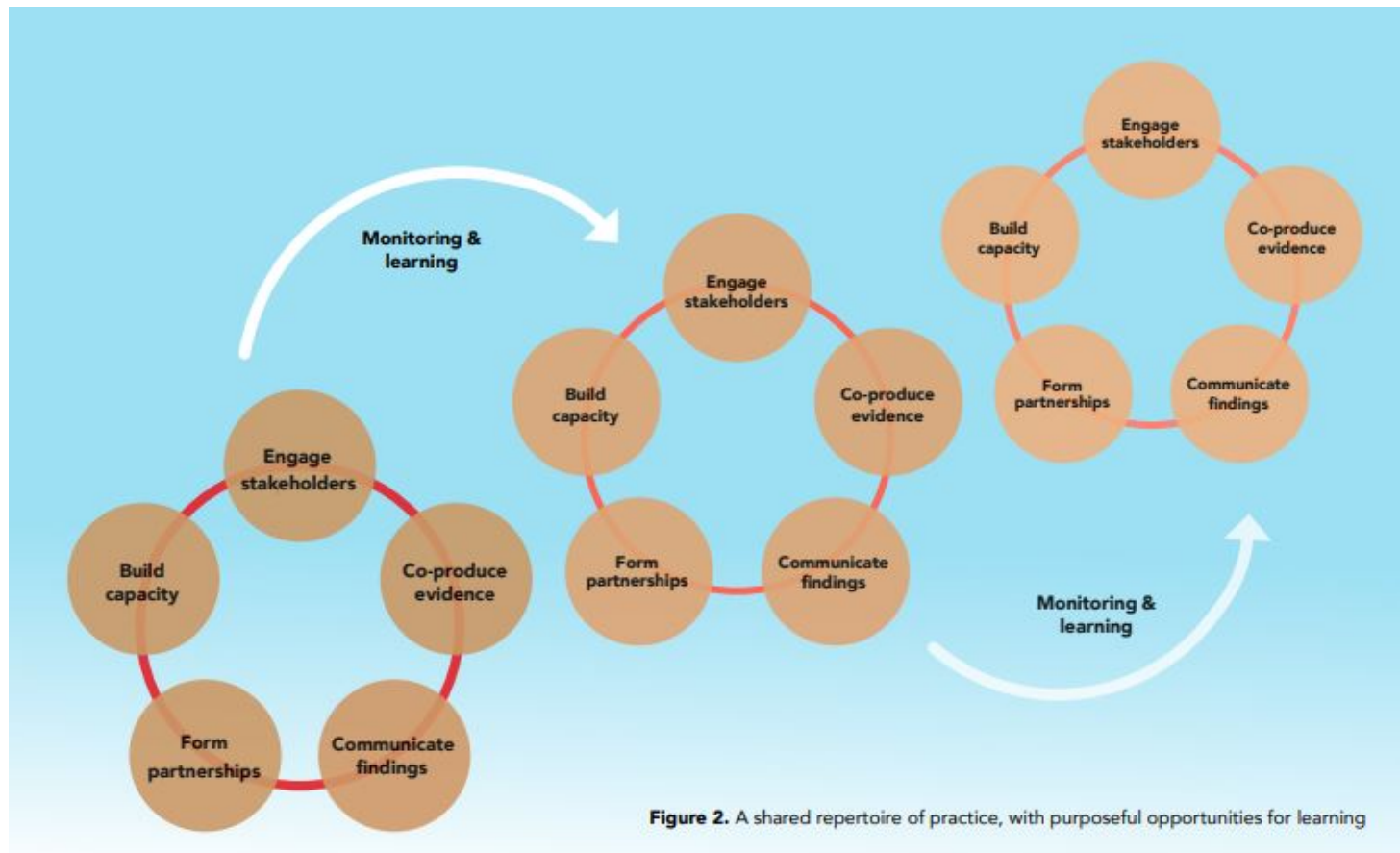
- Research uptake part of CARIAA from the start
- Mid-term evaluation: great deal of variability, many conflating stakeholder engagement with “Research-into-use”/Research for Impact
- Initiated program-level co-creation & learning process that resulted in an active community



What is Research for Impact?



A shared repertoire of practice, with purposeful opportunities for learning



What have we learned?

Research for Impact requires dedicated and trained personnel, but this does not mean researchers are exonerated

Don't assume that:

- a) individual researchers buy into the need to invest time in Research for impact
- b) host institutions have the incentives in place to recognize excellence in this area
- c) that researchers have the capacity to pursue R4I



Learn more:



<https://www.coursera.org/learn/research-for-impact>

Thank you!

